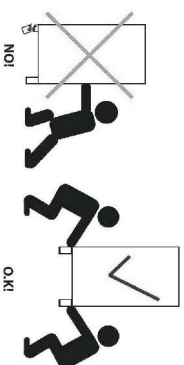
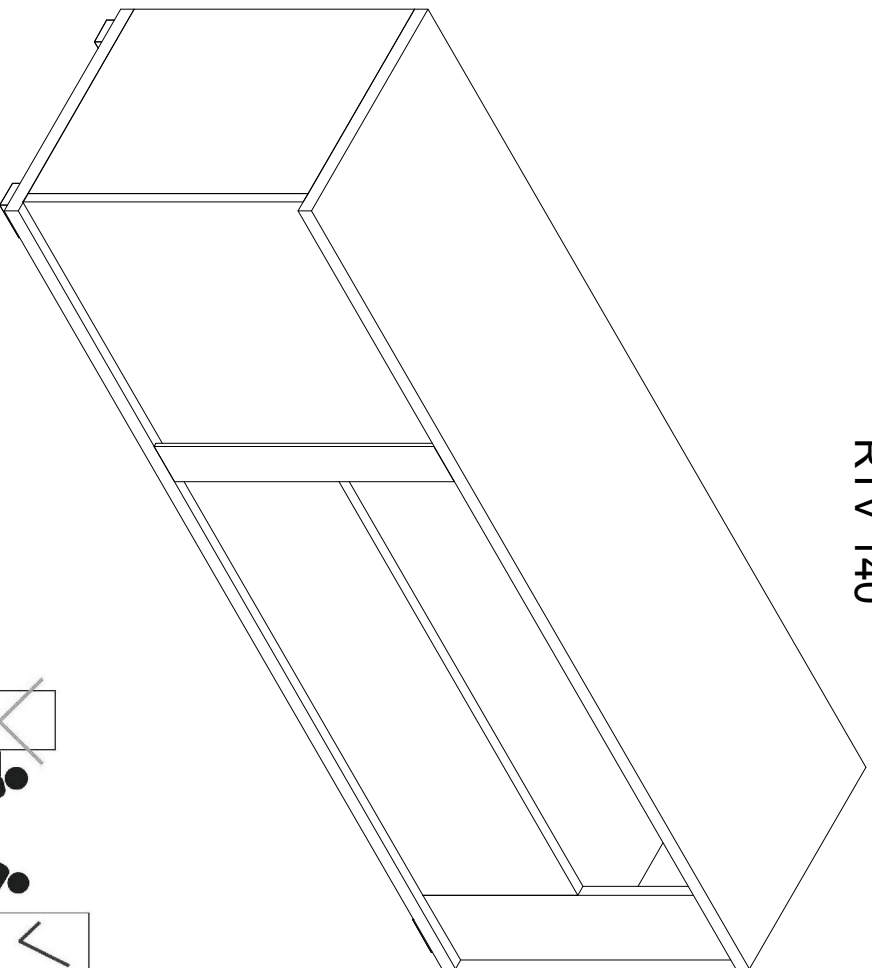


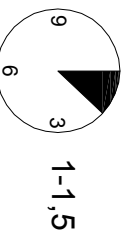
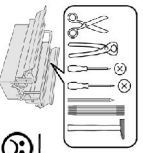
MARKUS

RTV 140



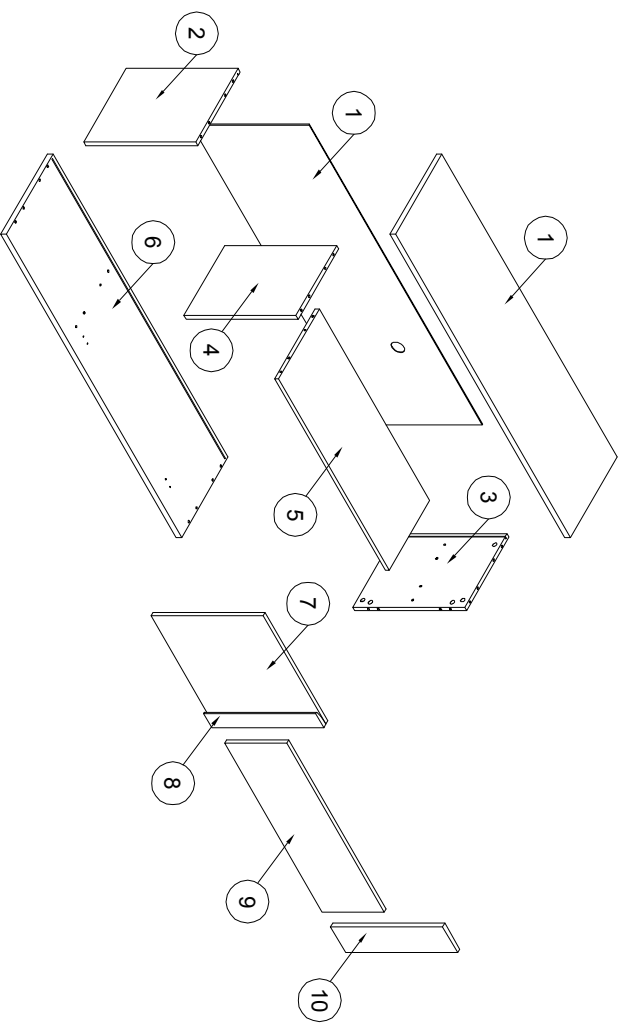
22.03.2016

- (D) Montageanleitung
- (FR) Notice de montage
- (NL) Handleiding voor de montage
- (CZ) Montážní návod
- (HU) Szerelési útmutató
- (TR) Montaj talimatı
- (GB) Assembly Instructions
- (IT) Istruzioni di montaggio
- (PL) Instrukcja montażu
- (SK) Návod na montáž
- (RO) Instrucțiunile de montaj
- (RU) Инструкции по монтажу

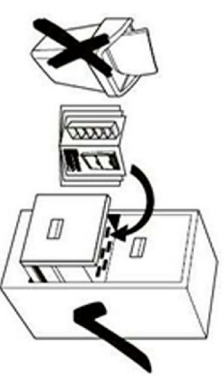
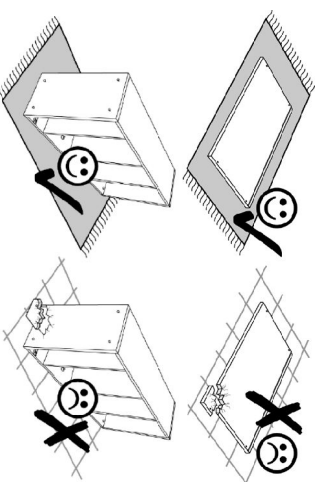


1-1,5

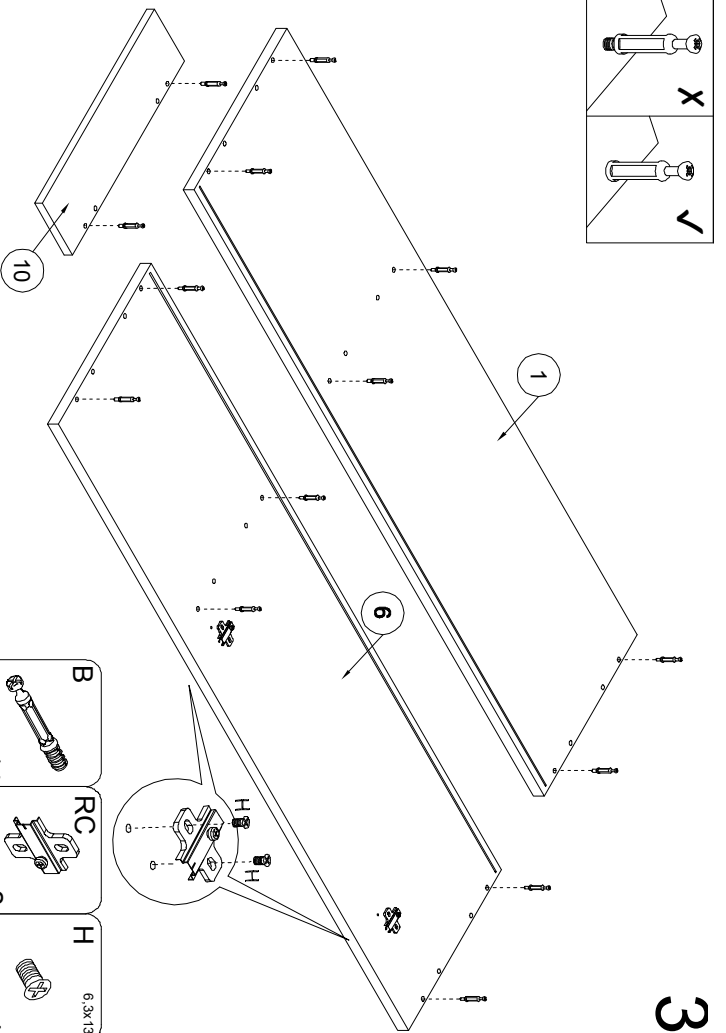
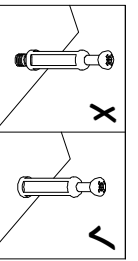
1



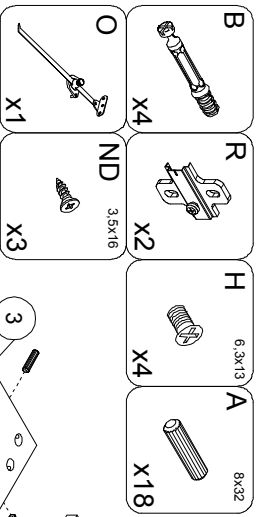
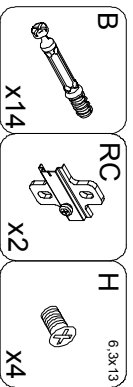
X	X6	N	3x20	Y	X5	C	X18	Z	X18	O	X1	NA	4x13	PC	X2
B	X18	RC	X2	R	X2	H	6,3x13	A	8x32	NF	4x30	ND	3,5x16	P	X2
							X8		X18		X2		X8		X5



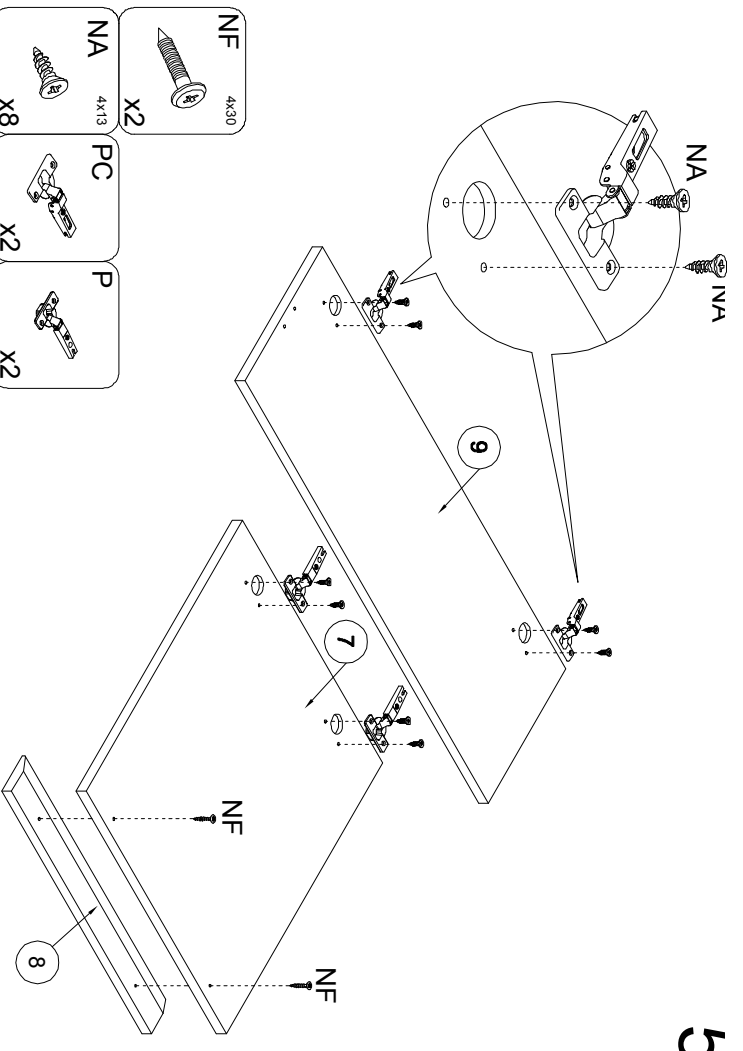
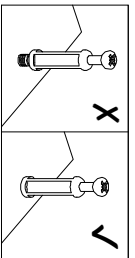
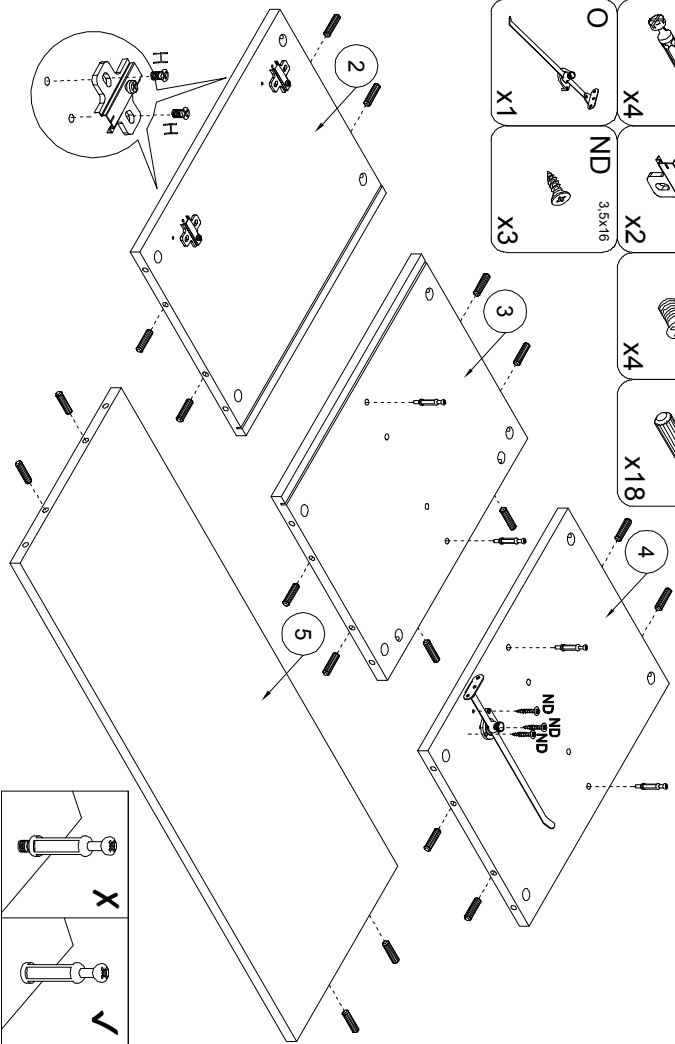
2



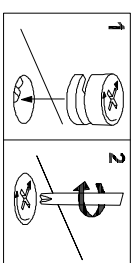
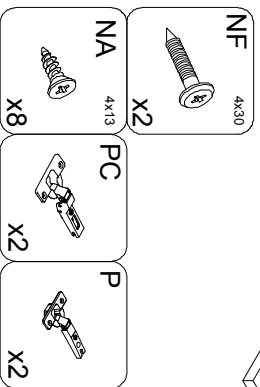
3



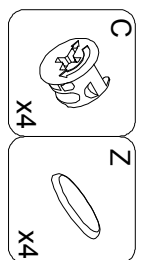
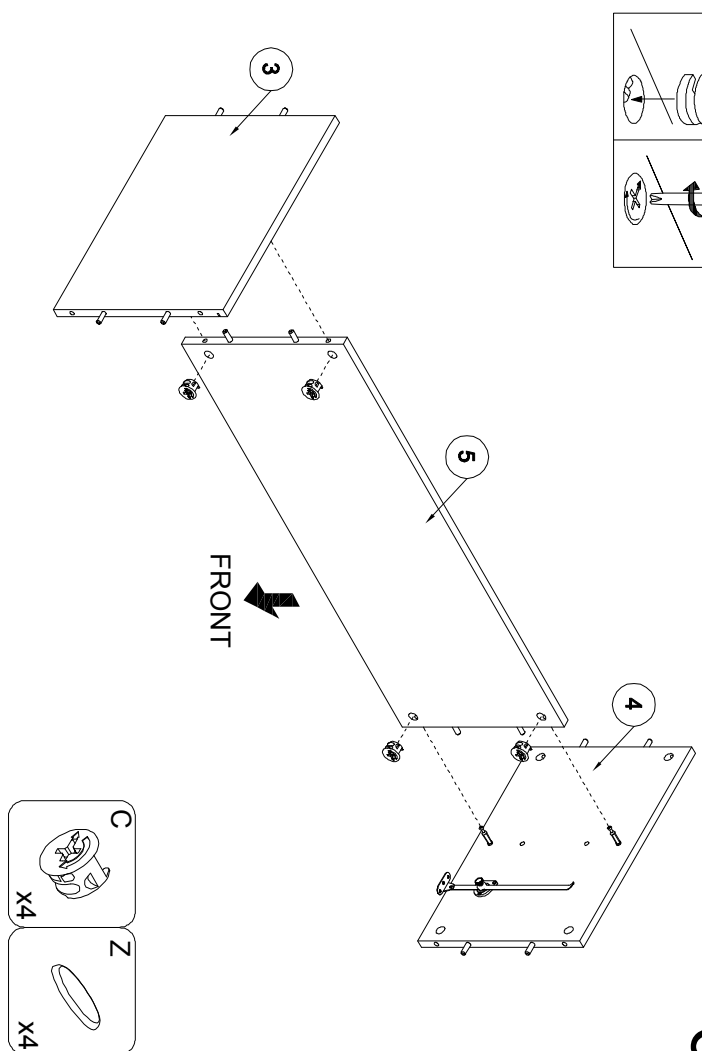
4

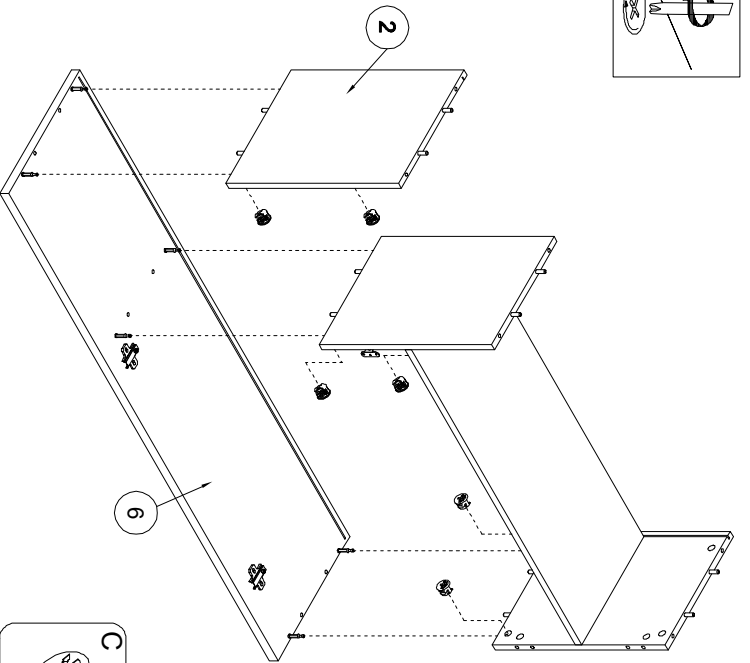
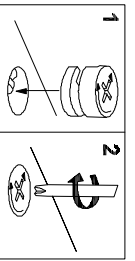


5

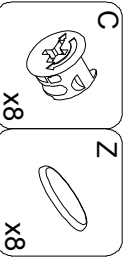
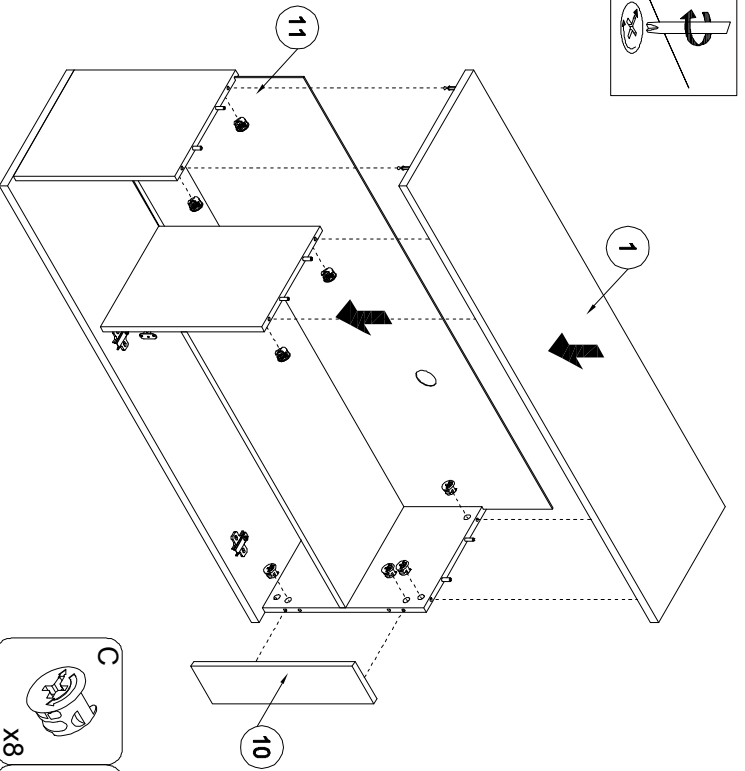
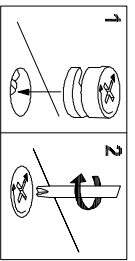


6

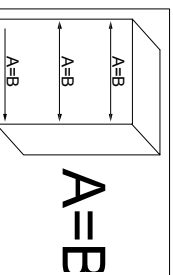
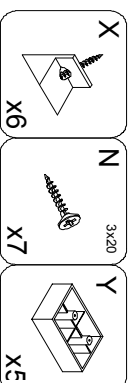
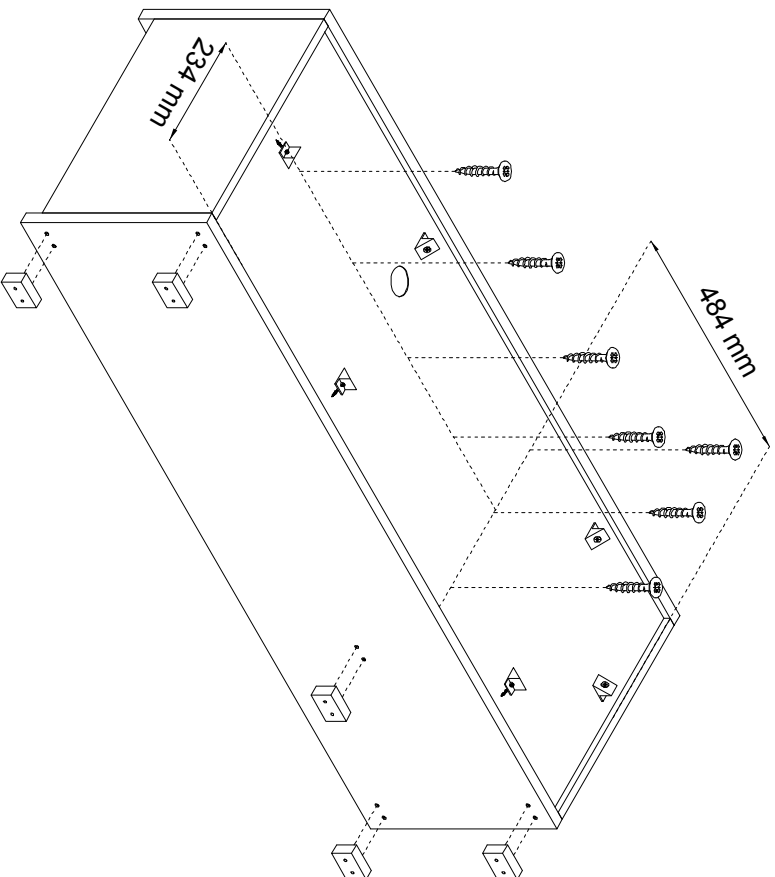
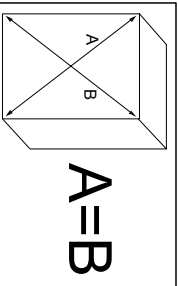




7

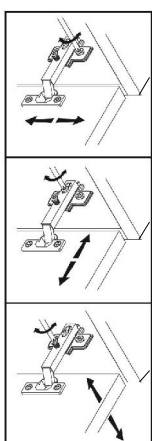
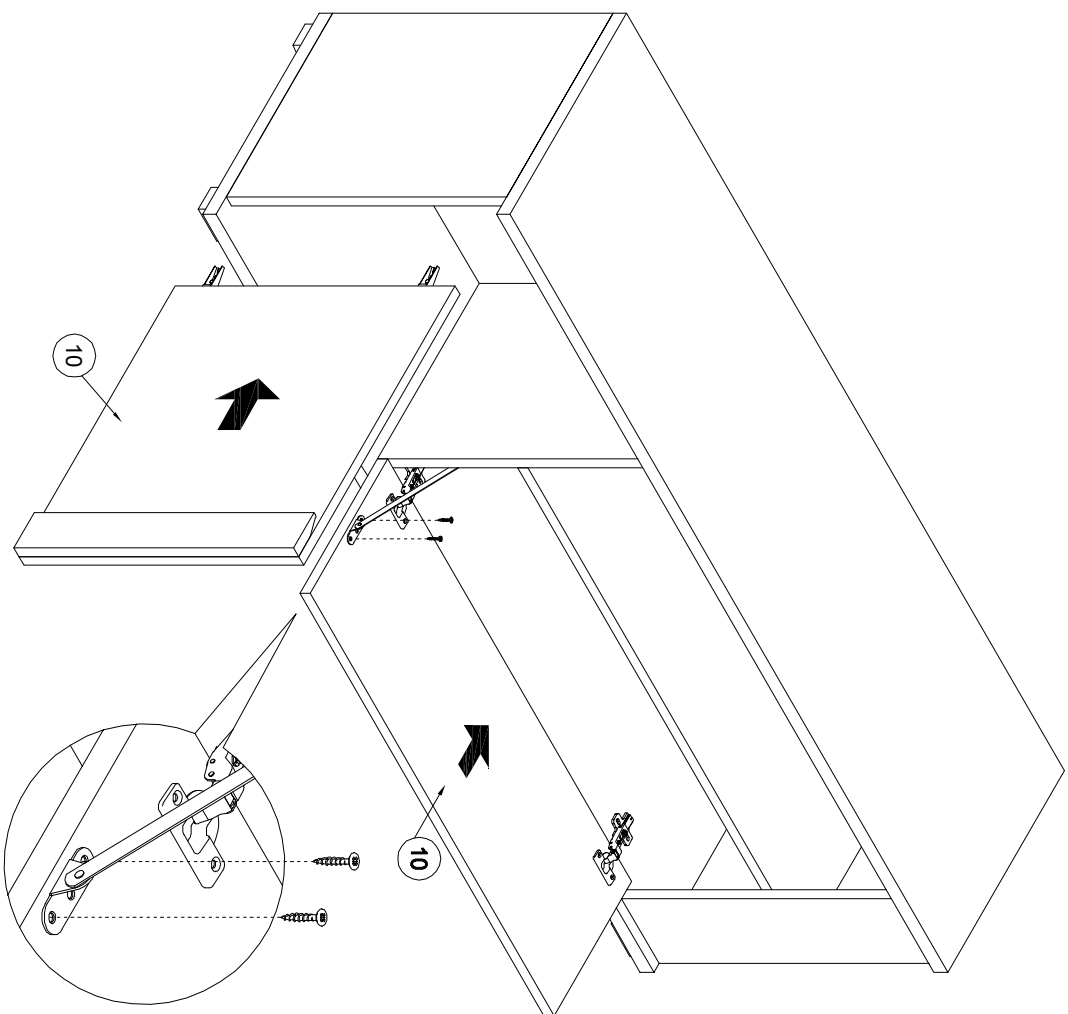


8



A=B

9



10

ND
3.5x16
X2